



Brisa Driving School Inc. is providing free of charge the following sample set of questions and answers for your information and practice.

The following provides questions and answers information to pass your knowledge and/or written test with the Ministry of Transportation.

Please, bring to your attention that its content is not a copy of the actual test. You must be able to read and understand the meaning of its content: For additional information call us to (416) 245-2812

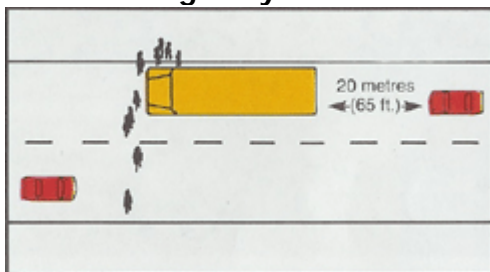
**1. When approaching a railway crossing at which an electrical or mechanical signal device is warning of the approaching train you must...**

A/ Stop not less than 5 meters (15 ft.) from the nearest rail.

**2. When a school bus has stopped with its upper alternating red lights signal flashing.**

A/ A driver must stop at least 20 meters behind the bus and wait until the signal lights stop flashing

**Two-lane highway or street**



**Cars in both directions must stop**

**Multi-lane highway with median strip**



**Only cars behind must stop**

**3. What is the fine for failing to stop for a school bus?**

A/ The Fine is from \$400 to \$2000 and loses 6 demerit points in the first offence.

**4. Vehicle's head and rear lights are required to be clearly visible for at least...**

A/ 150 meter

**5. When do you use the parking lights?**

A/ For parking only

**6. The vehicle lights should be on**

A/ From 30 minutes before sunset to 30 minutes after sunrise and whenever visibility is poor.

**7. While on the highway, a driver should switch to low beam...**

A/ Within 60 meters when following a vehicle or 150 meters when meeting oncoming vehicle.

**8. When parking your vehicle down hill you should...**

A/ Turn your front wheel towards the curb and put your parking brake on.

**To obtain your driver's license in Ontario, contact Brisa at (416) 245-2812**



**9. Before moving your vehicle, when you are parked on the road, you should...**

A/ Signal; check your blind spot to make sure is clear and safe to get back onto the road. Look for vehicles, cyclist, pedestrians and others before getting into traffic.

**10. Why is it dangerous to drive at the maximum speed limit at night?**

A/ Because visibility is poor and limited at nighttime.

**11. What is the fine for drivers not wearing a seat belt?**

A/ The fine is up to \$500 and driver loses 2 demerit points.

**12. A broken line on the left side of your lane allows you to pass, if the road ahead is clear and it is safe to do so.**

**13. A solid line or a double solid lines on the left side of your lane means**

A/ You should not pass! it is unsafe to pass.

**14. When entering a highway from a driveway or a private road you must...**

A/ Yield the right-of-way to pedestrians, cyclists and vehicles.

**15. What is the required space between the vehicle in front of you and yours?**

A/ A minimum of 2 seconds.

**16. If you get involved in a collision while using a cellular phone...**

A/ You could be charged with dangerous or careless driving

**17. A GI driver is allowed to drive a vehicle only under the instruction of a driver with a valid class G license or higher with at least 4 years of experience. The accompanying driver must sit on the front passenger seat.**

**18. The air pressure of the spare tire must be.**

A/ The same as the tire with the highest pressure on the vehicle.

**19. What happens to the vehicle of a driver who is convicted of driving with a suspended license for a criminal code offence?**

A/ The vehicle will be impounded for at least 45 days.

**20. When approaching a traffic light that is changing from green to amber**

You should stop, if you can do it safely, otherwise proceed with caution.

**21. When two vehicles stop at the same time at an uncontrolled intersection**

A/ The vehicle on the right has the right-of-way.

**22. What is the maximum legal level of blood alcohol concentration for fully licensed drivers?**

A/ 0.08

**To obtain your driver's license in Ontario, contact Brisa at (416) 245-2812**



**23. By law, when do you have to report any collision to the police?**

A/ When there are injuries or damage to vehicles or other property exceeding \$1,000.00

**24. When involved in a collision you must stay at the scene or return immediately and give all possible assistance**

**25. Your license will be canceled if...**

A/ You fail a driver's re-examination test or if you do not pay the renewal fee.

**26. In Ontario, all highway railway crossings are marked with...**

A/ A large red and white signs in the form of X.

**27. Are you allowed to lend your license or use somebody else license?**

A/ No, it is illegal.

**28. When meeting oncoming vehicles with bright lights at night time, the safest thing to do is**

A/ To look up ahead and slightly to the right.

**29. When a police officer is directing the traffic---**

A/ You should follow his/her directions even if they don't agree with the traffic lights or signals

**30. What is the purpose of the demerit point system?**

A/ The demerit point system encourages drivers to improve their behaviour and protects people from drivers who abuse the privilege of driving. It identifies persistent traffic violators.

The Demerit Point System		Demerit point suspensions
<b>Points</b>	<b>Offence</b>	<p><b>Fully licensed drivers</b> At 15 points, your licence will be suspended for 30 days from the date you hand over your licence to the Ministry of Transportation. You can lose your licence for up to two years if you fail to hand over your licence. After the suspension, the number of points on your driver's record will be reduced to seven. Any extra points could again bring you to the interview level. If you reach 15 points again, your licence will be suspended for six months.</p> <p><b>Graduated Licensing</b> As a Level One or Level Two driver, your licence will be suspended if you collect nine or more points during a two-year period. At nine points, your licence will be suspended for 60 days. After the suspension, the number of points on your record will be reduced to four. Any extra points could again bring you to the interview level. If you reach nine points again, your licence will be suspended for six months.</p>
<b>7</b>	<b>Failing to stop for police Failing to remain at the scene of a collision</b>	
<b>6</b>	<b>Careless driving Racing Exceeding speed limit by 50 km/h or more Failing to stop for a school bus</b>	
<b>5</b>	<b>Driver of bus failing to stop at an unprotected crossing</b>	
<b>4</b>	<b>Exceeding speed limit by 30 to 49 km/h Following too closely</b>	
<b>3</b>	<b>Exceeding speed limit by 16 to 29 km/h Driving through, around or under a</b>	

	<b>railway crossing barrier</b> <b>Failing to yield the right-of-way</b> <b>Failing to obey a stop sign, traffic signal or railway crossing signal</b> <b>Failing to obey the directions of a police officer</b> <b>Driving the wrong way on a divided road</b> <b>Failing to report a collision to police</b> <b>Improper driving/passing where road is divided into lanes</b> <b>Crowding the driver's seat</b> <b>Going the wrong way on a one-way road</b> <b>Driving or operating a vehicle on a closed road</b> <b>Crossing a divided road where no proper crossing is provided</b>	For further information contact the nearest Ministry of Transportation Driver Examination Centre
2	<b>Failing to lower headlight beam</b> <b>Improper opening of a vehicle door</b> <b>Prohibited turns</b> <b>Towing people - on toboggans, bicycles, etc.</b> <b>Failing to obey signs</b> <b>Failing to stop at a pedestrian crossing</b> <b>Failing to share the road</b> <b>Improper right and left turns</b> <b>Failing to signal</b> <b>Unnecessary slow driving</b> <b>Reversing on a divided high-speed road</b> <b>Driver failing to wear a seat belt</b> <b>Driver failing to ensure that a passenger less than 23 kg is properly secured</b> <b>Driver failing to ensure passenger under 16 years is wearing a seat belt</b>	
<b>Demerit points remain on your driving record for two years from date of the offence</b>		

**31. How long do demerit points remain on a driver's record?**

A/ It remains for 2 years from the day of the offence

**32. If you collect 9 demerit points while holding a G1 or G2 license**

A/ Your license will be suspended for 60 days

**33. If a fully licensed driver accumulates 9 demerit points...**

A/ The driver may be required to attend an interview or to complete a driver re-examination test

**To obtain your driver's license in Ontario, contact Brisa at (416) 245-2812**



**34. When a fully licensed driver accumulates 15 demerit points**

A/ The driver's license will be suspended for 30 days

**35. At all times, under all situations or weather conditions you should drive at speeds that will allow you**

A/ To stop safely and within a safe distance

**36. Never make a lane change until**

A/ You have checked safe clearance ahead, to the side, behind and have placed proper signals

**37. Can you park your vehicle in front of a fire hydrant?**

A/ No. You should park your vehicle at least 3 meters from the fire hydrant.

**38. What is the fine for parking in a space reserved for people with disabilities?**

A/ The fine is from \$50 to \$2000

**39. What precautions you should take when driving in foggy weather?**

A/ Use headlights on low beam, adjust vehicle's speed to the road conditions, do not pass other vehicles and be patient

**40. What is the major cause of vehicle skids on the road?**

A/ Driving too fast for road conditions, too fast around corners, braking too hard or suddenly stopping

**41. What is the appropriate action when approaching a yield sign?**

A/ Slow down or stop if necessary until the way is clear

**42. On a roadway when traffic is moving in both directions, in what position must you be in before making a left turn?**

A/ Immediately to the right of the center line of the roadway.

**43. What do you do when approaching a stop sign?**

A/ Come to complete stop. Stop at the stop line if it is marked on the pavement. If there is no stop line, stop at the crosswalk, marked or not. If there is no crosswalk, stop at the edge of the sidewalk. If there is no sidewalk, stop at the edge of the intersection. Wait until the way is clear before entering the intersection.

**44. What is the maximum speed limit on a highway where the speed limit has not been posted?**

A/ The maximum speed limit is 80 Km/h

**45. When entering a freeway, you should signal, then...**

A/ Accelerate quickly to freeway speed and merge with freeway traffic.

**46. When a street car has stopped to drop off or pick up passengers**

A/ You should stop 2 meters behind the rear door and proceed only when the street car closes its doors or when it is safe to do so.

**To obtain your driver's license in Ontario, contact Brisa at (416) 245-2812**



**47. If you have any trouble on a freeway, what should you do?**

A/ Put your emergency flashers on and pull over to the nearest shoulder. Never stop on traveled portions of freeway.

**48. All vehicle must be insured for a minimum third party liability insurance of...**

A/ \$200,000

**49. How much is the fine for failing to have your vehicle insurance or showing false documents?**

A/ The fine is from \$500 to \$2,500

**50. When another vehicle is attempting to pass you, what action should you take:**

A/ Maintain your vehicle speed, and move slightly to the right to give the passing driver a better view.

**51. What documents are you required to have when driving your car or somebody else's car?**

A/ You are required to have an Insurance liability card, vehicle ownership and a valid driver's license.

**52. If your right wheels should drop off onto a soft shoulder, what is the best way to maintain control and put your vehicle back onto the highway?**

A/ Slow down and when the vehicle is under control steer towards the road.

**53. If you are convicted of drinking and driving and causing bodily harm**

A/ You may be sentence up to 10 years in prison

**54. It is illegal to follow a responding fire department vehicle or ambulance**

A/ In any lane going in the same direction within 150 m

**55. What do you do when you hear the bell or siren of an emergency vehicle or see its lights flashing?**

A/ You must get out of the way. On a two-way road, stop as close as possible to the right-hand side of the road and clear of any intersection. On a one way road with more than two lanes, stop as close as possible to the nearest edge of the road and clear any intersection. Wait until the emergency vehicle has passed.

**56. Never try to pass another vehicle unless**

A/ You know you can do so, it is safe to do so, and you have used all the proper signals.

**57. When changing your name, address or ownership**

A/ You have to notify the Ministry of transportation within 6 days

**58. How does a driver protect the environment?**

A/ By keeping the vehicle tuned up, driving only when it is necessary and shutting down the engine when parked

**To obtain your driver's license in Ontario, contact Brisa at (416) 245-2812**



**59. How do you proceed when leaving the freeway?**

A/ Signal and prepare to move into the deceleration lane. Do not slow down until you have completely merged into deceleration lane. Once you are in the deceleration lane, slow down gradually to the speed shown on the speed advisory signs. Look as far ahead as possible and be cautious. Be prepared to stop at the end of the exiting ramp.

**60. Before opening the door of your parked vehicle**

A/ Make sure that you will not endanger any other person or vehicle and that it will not interfere with traffic

**61. What is the blood alcohol concentration level permitted in a G1 or G2 licensed driver?**

A/ Zero at all times.

**62. When towing a boat or trailer on the highway are you permitted to have people inside?**

A/ No, you are not permitted to have people inside. It is against the law

**63. What vehicles are equipped with flashing blue lights mounted on them?**

A/ Snow removal vehicles and can be seen from 150 meters

*Reproduction and sale of this document is forbidden. Copyright © 2005 Brisa Driving School Inc. All rights reserved*

**64. When drivers encounter large vehicles, which of the following considerations is most important?**

A/ You should be more cautious and give them an extra margin of space for maneuvering.

**65. When are you allowed to pass on the right?**

A/ When driving on a multi-lane roadway with 2 or more lanes. On one-way roads with two or more lanes.

**66. When there is a cyclist in front of you and the lane is not wide enough to share, who has the right to use the lane?**

A/ The cyclist has the right to use the whole lane

**67. It is dangerous and illegal**

A/ For a slower vehicle to cut off a faster moving vehicle.

**68. If the brakes fail, what is the best way to stop the vehicle?**

A/ Pump the brake pedal to restore hydraulic brake pressure and apply the parking brake gently but firmly while holding the release button.

**69. In wintertime, what parts of the road usually become icy as temperatures drop below freezing level?**

A/ Bridges, over passes, wet roads and shaded areas

**70. How do you proceed if a tire blows out while you are driving?**

A/ Take your foot off the gas pedal to slow down and steer the vehicle to a safely place or direction.

**To obtain your driver's license in Ontario, contact Brisa at (416) 245-2812**



**71. What is the conviction for careless driving?**

A/ The conviction is 6 months in jail, a \$1000 fine and 6 demerit points.

**72. If a G1 or G2 license holder violates any of the conditions imposed for that class license**

A/ Your license will be suspended 30 days.

**73. What is the minimum distance required to place flares lights or reflectors when a vehicle gets disable on the highway?**

A/ The minimum distance is 30 meters.

**74. How many points will remain on your record when your license G1 or G2 has been suspended because you have collected 9 demerit points and the 60 days suspension is done?**

A/ It will be reduced to 4 points.

**75. What must a driver do when a school crossing guard-guiding children is controlling traffic?**

A/ Ensure the safety of children and follow his/her instructions

**76. A conviction for impaired driving that caused injury or death means for a driver...**

A/ Losing the license for up to 10 years and may be sentence to prison for up to 10 years for caused injury or 14 years for caused death.

**77. For a G class driver, how many points will remain on the record when collecting 15 demerit points and the 30 days suspension time is over?**

A/ The number of points will be reduced to 7.

**78. In Ontario, it is mandatory that all vehicles be**

A/ Insured, registered and meet the basic safety standard.

**79. By law, all doctors must report when a driver**

A/ Has a condition that may affect their ability to drive. Driver's name, address and medical condition is reported to the Ministry of Transportation.

**80. Vehicles that weigh more than 4,500 kilograms must replace their front tires when...**

A/ It is less than 3 millimeters deep.

**81. A driver's license;**




A/ Indicates a person's privilege to drive a motor vehicle.

**To obtain your driver's license in Ontario, contact Brisa at (416) 245-2812**



**82. The law requires you to signal:**

A/ Whenever you intend to alter the direction or movement of your car.

		
Left Turn	Right Turn	Slowing Down OR Stopping

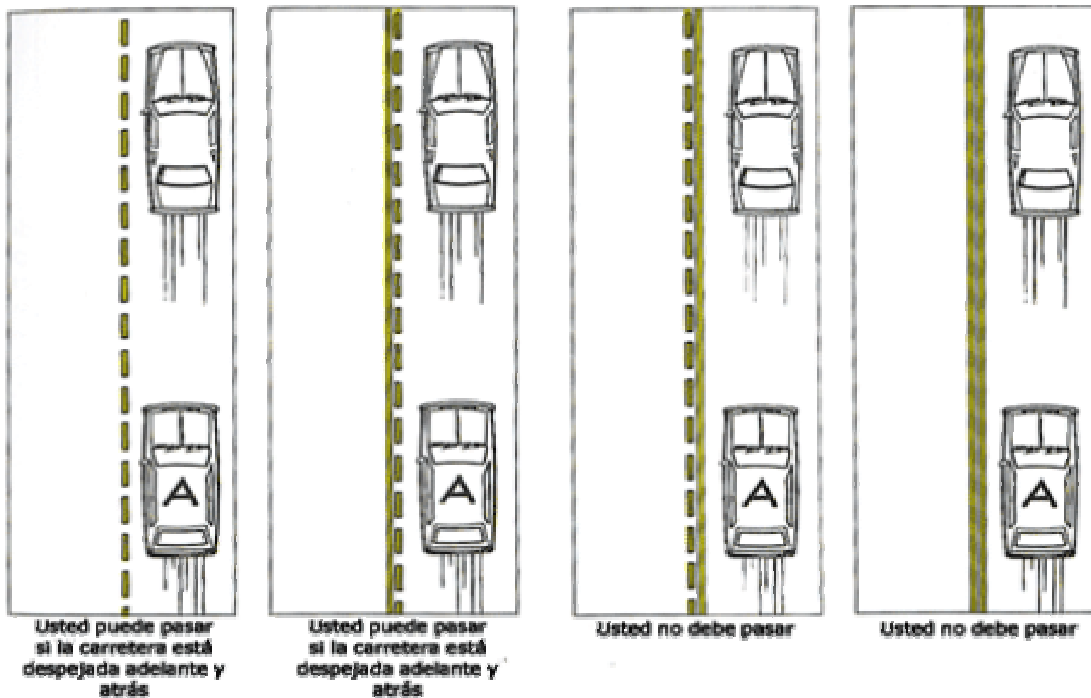
**83. What is meant by over driving your headlights?**

A/ Your are driving to fast to stop in the distance you can see.

**84. When does the motorist have a responsibility for safety and protection of all pedestrians?**

A/ At all times.

**Painted Centre Lines**



**To obtain your driver's license in Ontario, contact Brisa at (416) 245-2812**

